

## QUICK LAYOUT ACTIONS– USER GUIDE



These new actions are designed to allow the user to group a selection of images together to make a composite suitable for posting on websites such as Flickr, personal web pages and blogs.

The action will create a blank template and prompt you to select an image for each area of the template. You will then have the option of resizing the overall size, changing the line color from black to white, add extra panels for copyright messages or contact information.

For speed of use it is advisable to group all the images you intend to add top the template into the same folder. This is not essential as you will be presented with a dialog box at each step where you can navigate to your files.

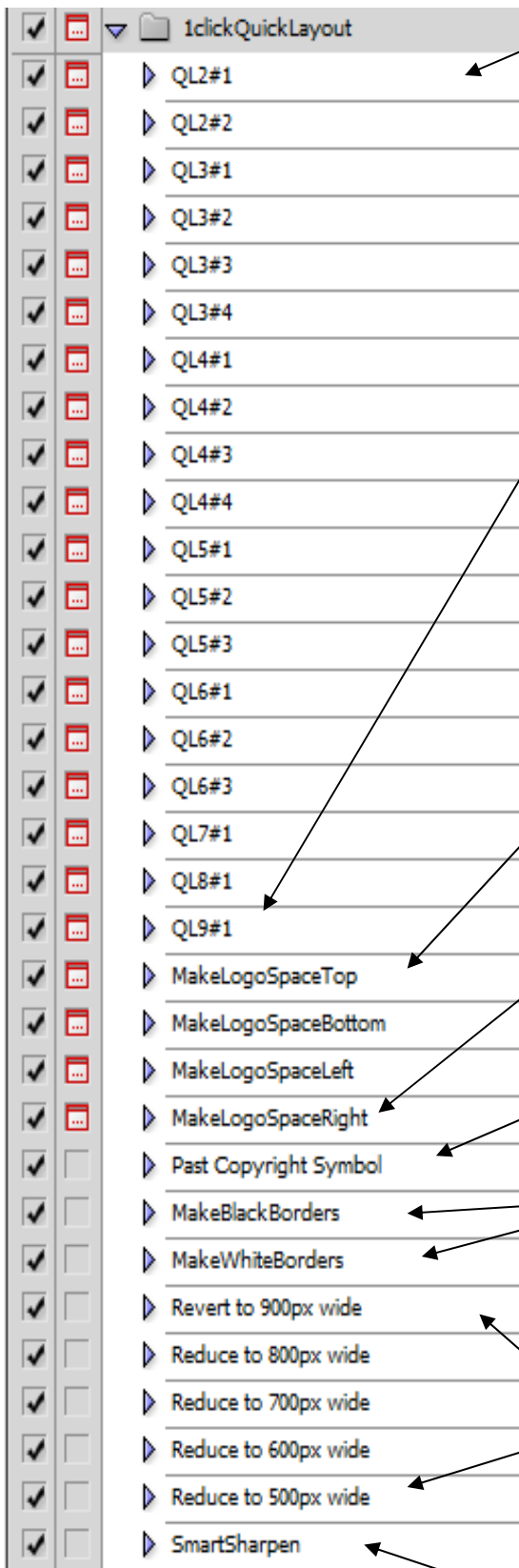
The templates allow you to position files so that they do not overlap the existing images and each image will be “confined” to its own space.

The actions create templates with a varying number of openings. For example an action called QL6xx will have 6 areas and an action called QL4xx will have 4 areas.

You do not any images open when you run the action as a new document will be created onto which you will place your photographs.

If you make a mistake you can manually change each image but to start with its probably easier to start over.

## The Quick Layout action palette



These actions create the template. Start with an empty Photoshop workspace and run one of these actions, a new document will then be created for you with a white background with black border lines.

The action name designates the number of areas in the template.

Most of the templates created have a width of 900 pixels and a resolution of 72ppi suitable for most blogs and web site postings.

These actions add an extra 75 pixels high (or wide) area at the top, bottom or side of your finished image. If you add a left or right logo space you might then want to run the Revert to 900px Wide action.

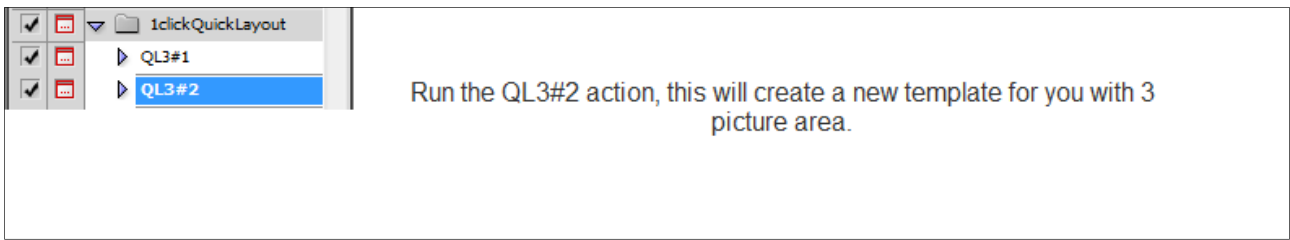
Adds a copyright symbol over the top of your completed image.

These actions change the border lines from black to white and vice-versa. Run these after you have placed you photos.

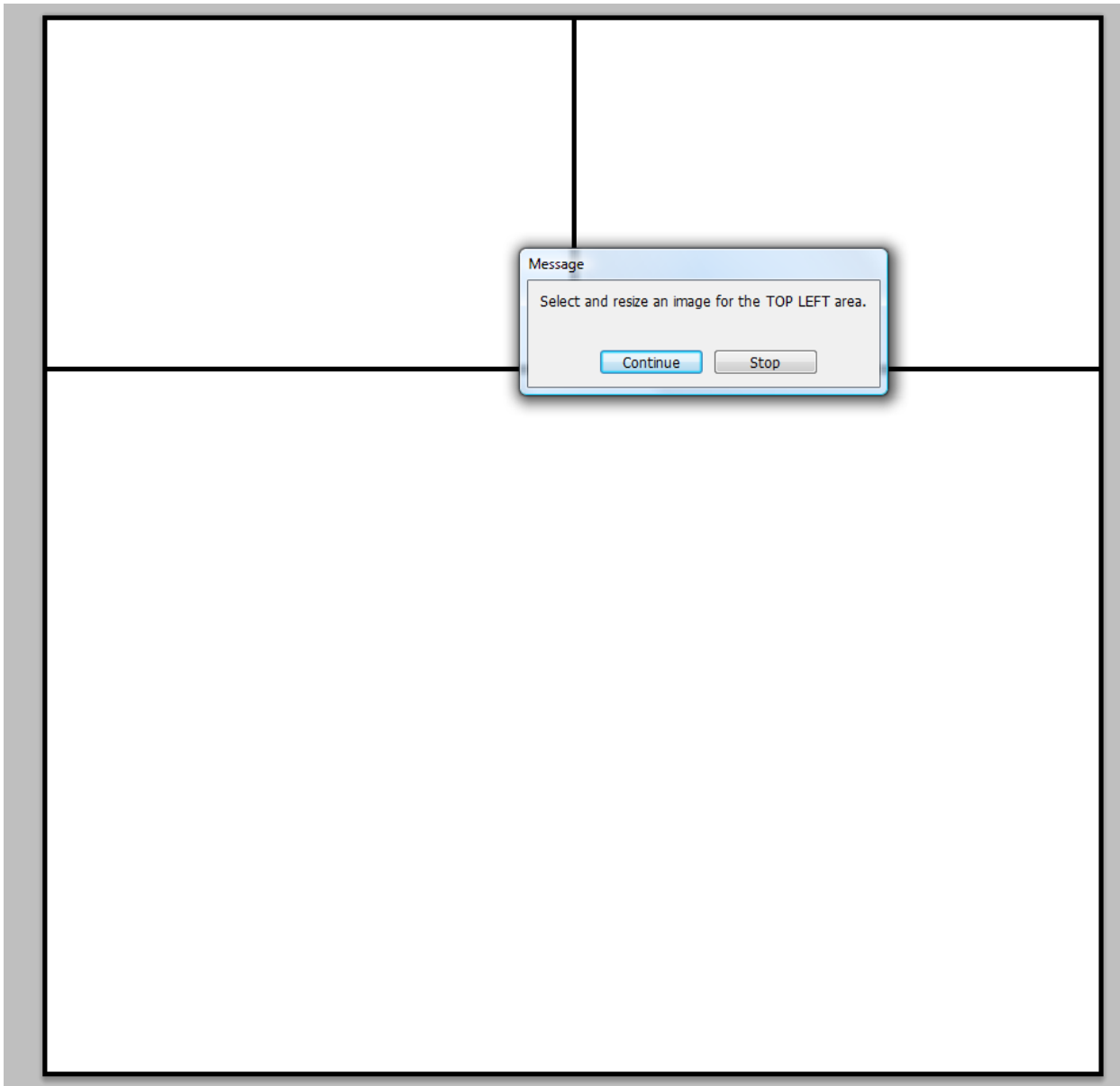
These actions resize the document for smaller pages. The Revert to 900px wide action returns to the default size. You should run these actions after the template creation actions.

Adds an adjustable sharpening layer

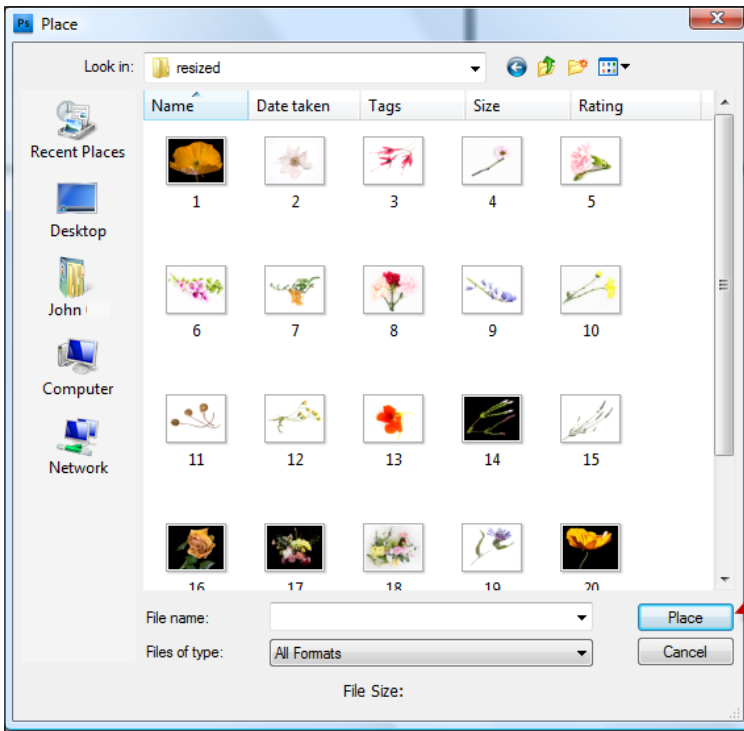
## Workflow Example



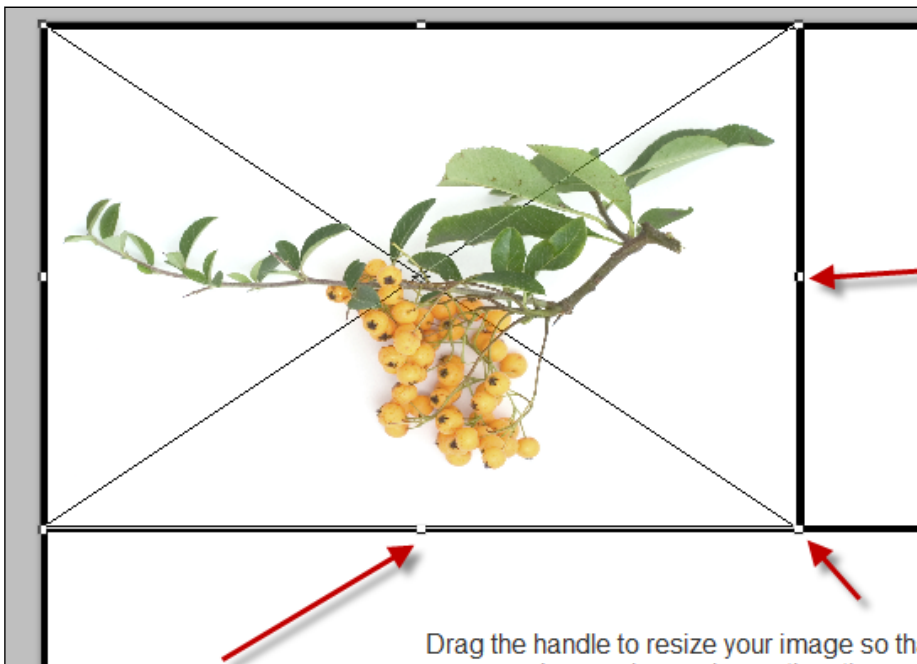
The screenshot shows a software interface. On the left is a file explorer with a tree view containing a folder named '1clickQuickLayout' and two sub-items, 'QL3#1' and 'QL3#2'. The 'QL3#2' item is selected and highlighted in blue. On the right, a text box contains the instruction: 'Run the QL3#2 action, this will create a new template for you with 3 picture area.'



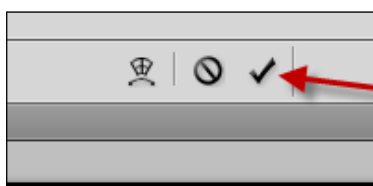
A 3-section template will be created for you and a dialog displayed prompting you to select an image for the top left area. Click "Continue" in the dialog.



Select your image for the top left square and then click the Place button.



Drag the handle to resize your image so that it fits the box. If you make your image larger than the marked box it will automatically crop the overlap. Your original file remains untouched. A useful technique is to hold down the SHIFT key whilst dragging one of the corner points - this way the resizing will retain the original aspect ratio and avoid distortion.



Click the Check mark (tick) on the toolbar or press ENTER when you are happy with the size and position.

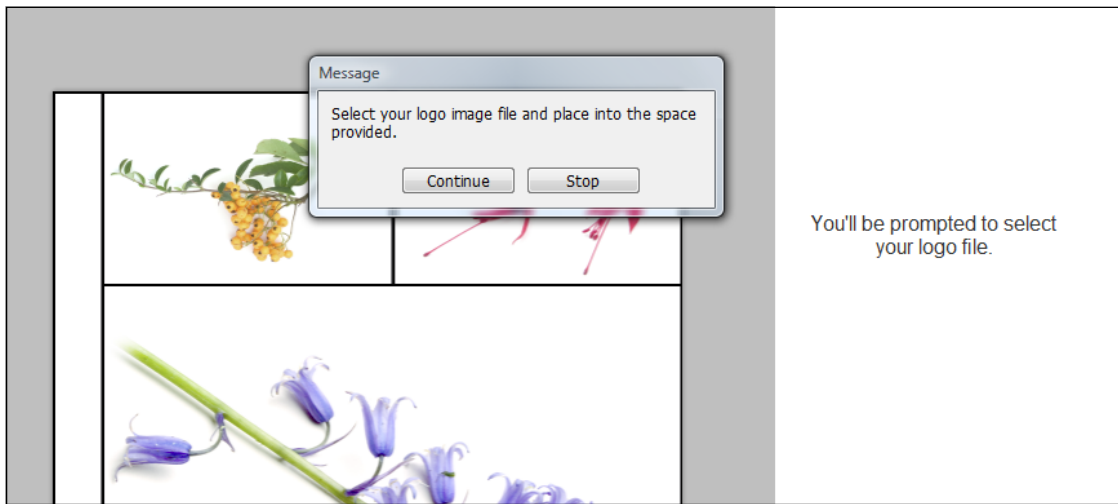
After completing the first area you will be prompted for images for the remaining squares until the template is filled.



At this point you can flatten and save if you are happy with the 900px wide dimensions. Option-ally you may want to add some sharpening (the final version of the QuickLayout actions will have sharpening actions built in. If you want to resize or add a logo bar or change the line colors **DO NOT FLATTEN** at this point.

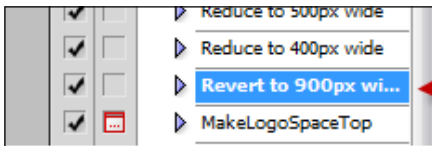
Reduce to 700px wide  
Reduce to 600px wide  
Reduce to 500px wide  
Reduce to 400px wide  
Revert to 900px wide  
MakeLogoSpaceTop  
MakeLogoSpaceBottom  
MakeLogoSpaceLeft  
MakeLogoSpaceRight  
MakeWhiteBorders  
MakeBlackBorders  
Past Copyright Symbol

We'll now add space for a logo at the left hand side. The default size is 900px by 75px so you might want to prepare a file of this size.



Resize (and if necessary rotate) your logo graphic to fit the new area created. You might consider creating a graphic logo file in a vertical format if you regularly use the Left or Right logo option.





Reduce to 500px wide  
Reduce to 400px wide  
**Revert to 900px wide**  
MakeLogoSpaceTop

You might notice that your image is now wider than the standard 900 pixels - it is in fact 975 pixels. You might want to run the "Revert to 900px wide" action and the entire image will be resized back to 900px wide.



Example after running the MakeWhiteBorders action.

*Actions and this document copyright 1-click actions 2009.*

<http://www.1clickactions.com>

<http://www.1clicklayouts.com>